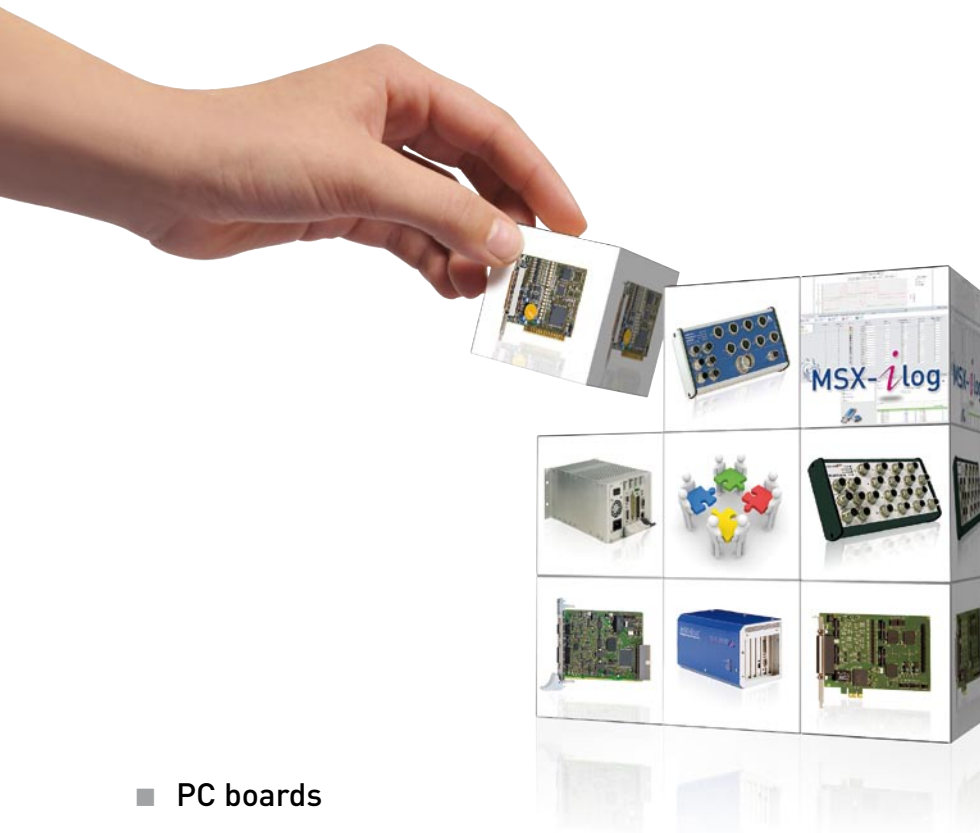


Solutions for Industrial Measurement and Automation



- PC boards
- Intelligent Ethernet Systems
- Real-time systems
- Data loggers
- Bespoke solutions

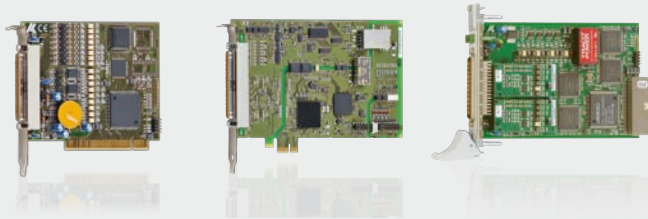
www.addi-data.com

ADDI-DATA[®]
SPIRIT OF EXCELLENCE



LONG-TERM AVAILABLE PC BOARDS

For a use in IPC, CompactPCI-Racks or MSX-Box

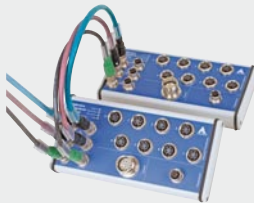


- Various signals can be processed: serial interfaces, digital, analog, counter, temperature, pressure, etc.
- Many protective circuits
- Free drivers for Linux, Windows and samples



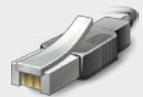
MEASUREMENT / CONTROL, CLOSE TO THE MEASURING POINT

Intelligent Ethernet systems MSX-E



DatabaseConnect

- IP 65, -40 °C/+85 °C
- Various sensor data can be acquired: temperature, pressure etc.
- Robust metal housings
- Export to databases without programming knowledge
- Stand-alone operating possible
- Ethernet-based

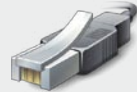


Ethernet

REAL-TIME MEASUREMENT AND CONTROL

Real-time Ethernet Slave Systems x-ARTS

- IP 65, -40 °C/+85 °C
- Various sensors can be acquired: temperature, pressure etc.
- Ethernet-based solutions
- Easy integration into existing real-time networks



Ethernet

REAL-TIME MEASUREMENT AND CONTROL

Open Source PAC systems MSX-Box

- Versions for PCI and CompactPCI
- Various sensors can be acquired: temperature, pressure etc.
- Field bus interfaces: CAN, Profibus
- Open source operating system: no update obligations
- Licence-free



Ethernet

LONG-TERM DATA RECORDING

Data logger MSX-iLog

- Many signal types: temperature, humidity, pressure etc.
- Visualisation: Live or recorded data using a curve diagram, display of value or level
- Alarm and export function (.xls, .csv)
- Ethernet-based solutions
- Stand-alone operating possible
- IP 65, -40 °C/+85 °C

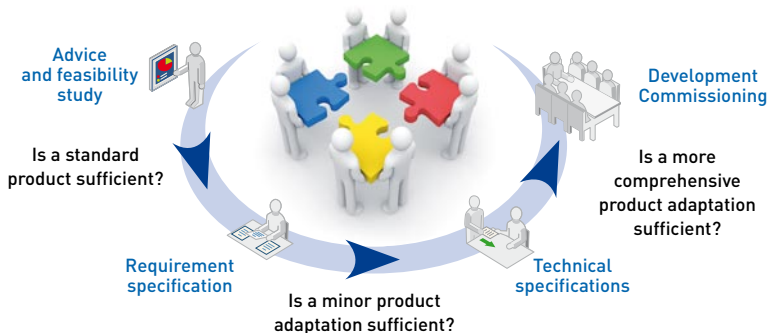
MSX-iLog



Ethernet

Bespoke solutions

Harsh industrial environments require special requirements. This is why we have specialised in solutions which meet these high requirements in an optimal way. In measurement, control and automation applications, standard components are normally used. But there are some requirements which cannot be satisfied with standard components. If in-house implementation is impossible, you will need a reliable partner who can offer you the precise solution as part of his service. Just ask us! We will be glad to help you, from the most minor adaptation to new product development.



Advice needed?
Then just call us at
Tel: +49 7229 1847-120 or send an e-mail to: info@addi-data.com.

ADDI-DATA GmbH
Airpark Business Center · Airport Boulevard B210
77836 Rheinmuenster · Germany
Phone: +49 7229 1847-0 · Fax: +49 7229 1847-222
info@addi-data.com · www.addi-data.com

ADDI-DATA®
SPIRIT OF EXCELLENCE