

BUILDING AUTOMATION



- Data recording without programming
- Acquisition close to the measuring point
- Distributed data acquisition and control in real time

www.addi-data.com

ADDI-DATA®
SPIRIT OF EXCELLENCE





Reliable measurement and control solutions for building automation

Modern buildings have to meet requirements such as high comfort standards and the necessity of optimising the energy consumption. Therefore sensor and acquisition systems are increasingly used in order to control diverse tasks and processes like consumption data, condition monitoring, power systems, data supervising or HVAC (Heating, Ventilating and Air Conditioning).

ADDI-DATA helps you in your project and offers reliable measurement and control systems which enable you to acquire various sensor data like temperature, humidity, carbon dioxide levels, ON/OFF status of lighting etc. In addition to diagnostic tasks, the robust systems can also be used for control tasks like switching signals on or off.

Responsibilities



Energy management



Lighting control



Data supervising



Power systems



HVAC control



Parking deck control

Benefits of our products

Ethernet-based: can share information with other devices or control units

Robust, also for outdoor use

Intelligent to relieve the load on control units

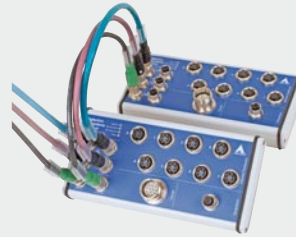
High quality for reliable use

Available for years to secure your investment

MEASUREMENT / CONTROL, CLOSE TO THE MEASURING POINT

Intelligent Ethernet systems MSX-E

- IP 65, -40 °C/+85 °C
- Various sensor data can be acquired: temperature, pressure etc.
- Robust metal housings
- Export to databases without programming knowledge
- Stand-alone operating possible
- Ethernet-based



DatabaseConnect



Ethernet

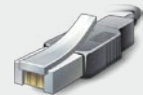
LONG-TERM DATA RECORDING

Data logger MSX-ilog

- Many signal types: temperature, humidity, pressure etc.
- Visualisation: Live or recorded data using a curve diagram, display of value or level
- Alarm and export function (.xls, .csv)
- Ethernet-based solutions
- Stand-alone operating possible
- IP 65, -40 °C/+85 °C



MSX-ilog



Ethernet

REAL-TIME MEASUREMENT AND CONTROL

Open Source PAC systems MSX-Box

- Versions for PCI and CompactPCI
- Various sensors can be acquired: temperature, pressure etc.
- Field bus interfaces: CAN, Profibus
- Licence-free
- Open source operating system: no update obligations



PROFIBUS

CAN

REAL-TIME MEASUREMENT AND CONTROL

Real-time Ethernet Slave Systems x-ARTS

- IP 65, -40 °C/+85 °C
- Various sensors can be acquired: temperature, pressure etc.
- Ethernet-based solutions
- Easy integration into existing real-time networks



EtherCAT

PROFIBUS

VARAN



Ethernet



Windows 7



LabVIEW™

DASyLab10
Data Acquisition System Laboratory



LabWindows/CVI™

DiAdem

VxWorks

RTX

YOUR PARTNER FOR SECURED INVESTMENT

Measurement, control, regulation – With solutions by ADDI-DATA



ADDI-DATA GmbH is an expanding international company based near Baden-Baden in Germany. Since 1984 the company has developed high-tech solutions for industrial measurement and automation. ADDI-DATA stands for quality, reliability, long-term product availability and service.

You will find ADDI-DATA solutions worldwide in numerous industrial areas: automotive and metal industry, engine building industry, tailor-made machinery, aircraft and chemicals industry, etc. The products are used for quality control, process control, signal switching, data acquisition, motion control or position acquisition.



Advice needed?

Then just call us at

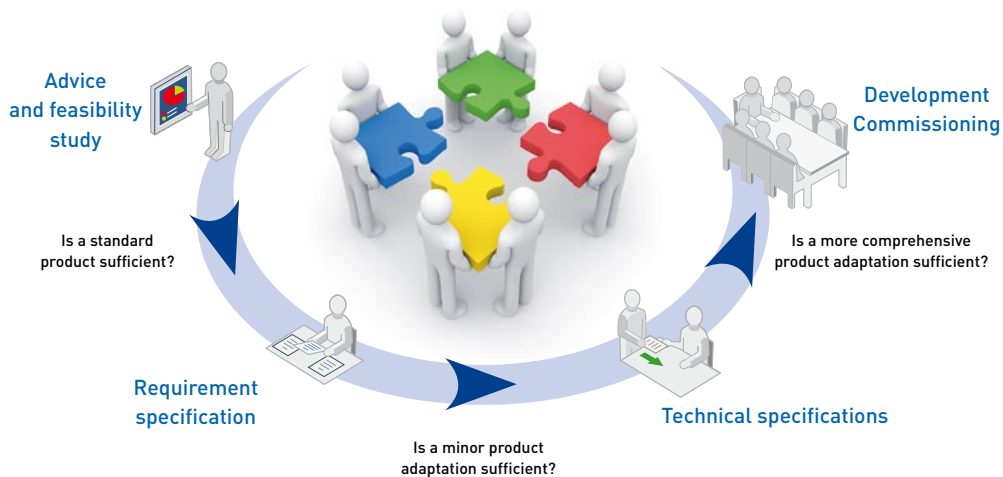
Tel: +49 7229 1847-120 or send an e-mail to: info@addi-data.com.

Bespoke solutions

Harsh industrial environments require special requirements. This is why we have specialised in solutions which meet these high requirements in an optimal way.

In measurement, control and automation applications, standard components are normally used. But there are some requirements which cannot be satisfied with standard components.

If in-house implementation is impossible, you will need a reliable partner who can offer you the precise solution as part of his service. Just ask us! We will be glad to help you, from the most minor adaptation to new product development.



ADDI-DATA GmbH
Airpark Business Center • Airport Boulevard B210
77836 Rheinmuenster • Germany
Phone: +49 7229 1847-0 • Fax: +49 7229 1847-222
info@addi-data.com • www.addi-data.com

ADDI-DATA[®]
SPIRIT OF EXCELLENCE